

INVESTING FOR THE FUTURE



LAYING THE GROUNDWORK FOR THE NEXT 25 YEARS

INVESTING FOR THE FUTURE

Dear Overlake Friends and Family,

Compassionate care is at the heart of everything we do at Overlake.

Due to the generosity of our donors, Overlake has been able to deliver world-class medical care each day to our patients, their families and our community. With your help this year, we were able to make a difference in the lives of thousands of patients and their loved ones. Whether it was improving patient access by expanding our clinic network, investing in technology, or offering new programs and services to enhance patient care, each gift received resulted in a direct investment toward the health and wellness of our community.

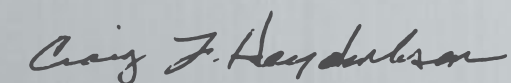
A major focus of Overlake this year has been to integrate and coordinate care across the continuum, to provide the maximum value and ensure even more positive patient experiences and outcomes. We believe that providers who deliver high quality healthcare more efficiently will be the ones that patients seek out. Regardless of how healthcare reform evolves, it is important not to lose sight of the fact that personalized quality care, delivered cost-effectively, is paramount. That's where Overlake excels. The continued generosity of our donors, combined with a culture that embraces quality and efficiency, will enable us to continue investing in areas where we can make the greatest impact and offer the greatest value.

During this time of rapid change in healthcare, community support is more important than ever. That's why Overlake Hospital Foundation recently launched campaigns to fund four key initiatives:

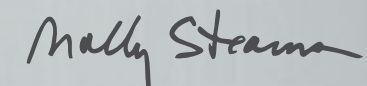
- Development of a new Heart and Vascular Center.
- Consolidation of our Cancer Center services.
- Construction of a new Neonatal Intensive Care Unit.
- Establishment of the "Ensuring Excellence" Fund to support our ability to provide exceptional care.

With the shared vision of our donors and the dedication of our talented staff, Overlake continues to deliver Medical excellence every day™. As always, we strive to provide peace of mind to our patients and their loved ones. We want them to know they will always receive the very best care. Thank you for your ongoing support and commitment to ensure we continue to meet that goal.

With warmest regards,



Craig Hendrickson
President and Chief Executive Officer
Overlake Hospital Medical Center



Molly Stearns
VP of Fund Development &
Executive Director of the Foundation





Larry Larsen and his wife Priscilla are grateful to Overlake for providing first-rate care.

THE HEART & VASCULAR CENTER



Artist Rendering

Overlake has been home to the most comprehensive program for cardiovascular and peripheral vascular care on the Eastside for more than 20 years. Today, the hospital's heart care team includes a network of specialists whose collective expertise and training has helped Overlake earn its reputation as an award-winning cardiac center.

NEW HEART & VASCULAR CENTER TO OFFER ADVANCED CARE

Overlake plans to bring its cardiac testing and therapeutic services together in one comprehensive Heart and Vascular Center.



RONNIER AVILES, MD,
EDWARD KIM, MD,
JEFFREY V. FOWLER, MD.

The new state-of-the-art Center will position Overlake at the forefront of advanced cardiovascular care. Cutting edge technologies and integrated care models will allow physicians, patients and families to come together as a team to meet the individual patient's needs.

The new facility will encompass nearly 20,000 square feet that includes pre- and post-procedure rooms as well as comfortable, private accommodations for patients and families. The Center will also feature new equipment, two electrophysiology suites, two cardiac catheterization labs, a vascular intervention radiology suite, nursing and administrative support space, and an easily accessible entrance off the main hospital lobby. Once complete, the Heart and Vascular Center will transform the patient experience with increased convenience, integration and efficiency – offering Eastside patients superior cardiovascular care.

The Foundation has launched a campaign to raise a minimum of \$2.75 million toward this exciting \$16 million project.

THE CANCER CENTER

The Cancer Center at Overlake is noted for its comprehensive services and technology, as well as for its exceptional patient experience. While the hospital offers advanced screening, diagnostic and treatment services, the clear focus is on the individual needs of patients.

CONSOLIDATED CANCER CENTER TO SUPPORT ENHANCED LEVEL OF CARE

Receiving a cancer diagnosis is a dramatic and life-altering experience. Patients can feel overwhelmed as well as anxious and need guidance through an often confusing process involving many different providers.

That's why Overlake has made it a priority to remodel the current facility to consolidate its outpatient cancer services into one fully integrated center. The new Center will offer seamless, efficient and coordinated care and allow more opportunities for physicians to collaborate in person. Easier access to all aspects of diagnosis and treatment means patients can concentrate on their treatment and restore their health. The facility will be designed with warm, welcoming surroundings to ease the stress patients and families can experience during cancer treatment.

The new Cancer Center will provide enhanced efficiency—an important development in the face of increased focus on controlling the costs of healthcare.

FUNDRAISING GOALS

The Foundation's fundraising goal of \$1.35 million will help develop a consolidated Cancer Center to include the following outpatient services:

- Cancer Resource Center.
- Medical oncology services.
- Radiation oncology services.
- Breast surgery clinic.
- Tumor registry.
- Social workers and patient navigator offices.

This initiative will also allow Overlake to enhance the Breast Diagnostic Center and centralize the oncology social worker and patient navigator programs that guide and support patients through every stage of their treatment.

COMMENDATION FOR EXCEPTIONAL CANCER CARE

In 2011, the Cancer Center at Overlake received a prestigious commendation from the American College of Surgeons Commission on Cancer (CoC).

To qualify, a CoC-approved facility must demonstrate patient centered access to state-of-the-art medical services, treatment, education, prevention, early detection, support services and follow-up care at the end of treatment including a survivorship care plan.



Nurses provide expert, compassionate care.



DANA BENSON AND JAN DEBELL
Breast cancer survivors.



Level III Neonatal Intensive Care Unit (NICU).

WOMEN'S AND INFANTS' SERVICES

Overlake's Women's and Infants' Center provides a full continuum of care designed for women in their childbearing years and beyond. Together, the Childbirth Center, Neonatal Intensive Care Unit (NICU) and Women's Clinic all provide superior medical care in welcoming, healing environments. Overlake continually invests in its facilities, equipment and staff so that women and their families receive high-quality medical care at a location convenient to home.

Overlake's outstanding care continues after families return home from the hospital. The Women's Clinic provides postpartum care, breastfeeding support and hearing screening for newborns. Women have access to experienced mother/baby nurses and referrals to pediatricians and lactation consultants — all of which give new mothers the information and confidence they need.

NEW NICU TO OFFER ELEVATED LEVEL OF CARE FOR NEWBORNS

Welcoming a new child can be one of the most joyful moments of life. However, for the approximately 400 fragile newborns treated at Overlake's NICU each year, it can be a time of extraordinary worry and stress for parents and families. Overlake understands how important it is for parents to stay by their infant's side during that difficult time. That's why the sophisticated antepartum program and level III NICU focus on providing highly skilled support for families as well babies in need of critical care.

To ensure Eastside families continue to have the best staff, facilities, technology and equipment, the Foundation is raising funds to build a new NICU. The facility will enable better care for the growing number of high-risk newborns treated each year.

The new NICU will allow Overlake to:

- Provide state-of-the-art childbirth services where babies can receive specialized care at a facility close to home.
- Utilize the latest technology to care for newborns as early as 26 weeks.
- Offer private rooms, including daybeds, to welcome families to stay overnight.
- Create a more spacious, modern facility with natural light that promotes a peaceful and healing environment.

These improvements will help further enhance a program that is already ranked as one of the best in the country, bringing added peace of mind to Eastside parents and families.



Seattle Children's[®]
HOSPITAL · RESEARCH · FOUNDATION

Overlake and Seattle Children's have partnered to make sure new babies receive the very best care after birth. The NICU is staffed by neonatologists and neonatal nurse practitioners (NNPs) from Seattle Children's.

ENSURING EXCELLENCE

Overlake's Ensuring Excellence Fund supports critical programs that allow the hospital to deliver Medical excellence every day™. Donor gifts are invested in the latest technologies, superb medical staff and high quality, compassionate care, to help patients and families improve health and wellness. This discretionary funding provides support to critical programs across the hospital, such as senior care and palliative care programs as well as psychiatric services. The hospital ensures that dollars are spent where the impact will be greatest.

OVERLAKE OFFERS EXCEPTIONAL CARE FOR ELDERLY PATIENTS

Overlake recognizes that older adults may find managing multiple health conditions a challenge. For these patients, Overlake's goal is to encourage health, independence and informed participation in healthcare decisions. An important way to ensure that older patients' needs are met is to educate nurses in effective geriatric care. By participating in the Nurses Improving Care for Healthsystem Elders (NICHE) program, Overlake's nursing staff is specially trained to manage conditions specific to geriatric patients while promoting a positive hospital experience. Overlake has been a NICHE hospital for six years and is one of only three hospitals in Washington and one of 300 nationwide with this designation. NICHE was implemented at Overlake through a partnership with Overlake's Senior Care program and its Senior Health Clinics, resulting in an enhanced level of service for its senior patients.

For 25 years, the Senior Care program at Overlake has supported older adults facing a variety of issues and challenges. Many of Senior Care's clients are referred by discharge planners during a hospital stay, from doctors in the community and from emergency department staff when patients are identified to be "at risk" with complex medical and/or social needs. The Senior Health clinics are staffed by teams that emphasize prevention and wellness, and are specially trained to meet the unique health needs, both mental and emotional, of aging adults.

PALLIATIVE CARE PROGRAM OFFERS SUPPORTIVE, PATIENT-FOCUSED CARE

To better address the needs of seriously ill patients, Overlake launched its new palliative care program. The service offers additional support to patients and their families by complementing a patient's existing medical care. A team of physicians and nurses – specially trained in palliative medicine – work with the rest of the patient's medical team to deliver a higher level of care. Whether it is relieving symptoms, easing suffering during a hospital stay, or helping support a patient's emotional and spiritual needs, palliative medicine goes beyond just treating the disease to focus on the whole person with compassion and nurturing care.

PSYCHIATRIC SERVICES OFFER CARE FOR ADULTS AND ADOLESCENTS

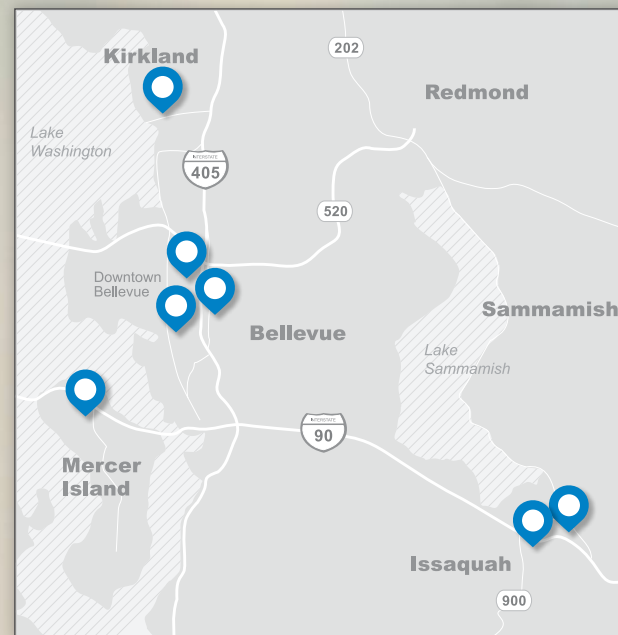
For more than 30 years, Overlake has been the leader in providing quality adult and adolescent psychiatric care to the Puget Sound community. The hospital offers both inpatient and outpatient psychiatric services. Experienced professionals take a team approach to treatment, developing a plan customized to each individual. The Specialty School at Overlake is a unique program coordinated with school districts, community service providers and families to provide academic, social, emotional and behavioral support for students grade one through grade 12. The school provides a therapeutic environment where students learn skills through instruction as well as hands-on experience. The Specialty School is recognized by school districts as a leader in helping students who need specialized behavioral services.



DEAN QUALL
Joint replacement patient.



SAI PRASANNA MANNEM, MD,
Overlake Medical Clinics
Downtown Bellevue.



IMPROVED INTEGRATION AND COORDINATION OF CARE

Overlake experienced a year of extraordinary growth while integrating services and keeping an eye to the future.

OVERLAKE GROWS A NETWORK OF MEDICAL CLINICS

Overlake understands how busy people's day-to-day lives can be. That's why the hospital provides patients with convenient, accessible medical care located close to where they live and work. When there's an Overlake doctor close by, people don't need to take a half a day off work or miss a whole day of school. As part of this commitment, Overlake is expanding its network of medical clinics throughout the Eastside. Overlake Medical Clinics Downtown Bellevue opened in October 2010, and Overlake Medical Clinics Kirkland opened in October 2011. Overlake is also moving forward on the construction of two more clinics in Redmond, including the Redmond Urgent Care and Imaging Center opening in January 2012. All clinics are staffed with highly qualified general internists and family practice physicians. With same-day or walk-in appointments, this model offers a less expensive alternative to a freestanding emergency room, providing easy access to high-quality care.

- 2002** - Overlake Medical Clinics (OMC) Medical Tower
- 2003** - OMC Issaquah
- 2010** - OMC Downtown Bellevue
- 2011** - OMC Kirkland
- 2012** - OMC Redmond Urgent Care and Imaging Center (opens in January)
- 2012** - OMC Redmond (opens in March)

MEDICAL HOME MODEL PAVES THE WAY FOR PRIMARY CARE

Overlake is helping to transform the way physicians deliver primary care by adopting a patient-centered "medical home" approach to healthcare. Based in Overlake's clinic in the Medical Tower on the main hospital campus, this effort is part of a two-year pilot program launched by the Washington State Health Care Authority and co-sponsored by the Washington State Medicaid Program and Puget Sound Health Alliance.

At the heart of this approach is the concept that all patients will have a primary care physician who acts as their medical home, coordinating with specialists and closely managing each patient's care. Having a single doctor coordinate care helps prevent gaps and redundancies in the patient's treatment and offers greater convenience to its patients. Overlake is one of only a few hospitals in Washington taking part in this pilot project, demonstrating its leadership in improving primary care service. As Overlake grows its network of clinics, it will continue to implement this patient-focused model of care.

OVERLAKE REACHES OUT TO THE COMMUNITY

Overlake goes beyond treating an illness or injury. The hospital firmly believes education is critical to overall wellness so the organization reaches out to the community to engage and empower its patients in becoming educated healthcare consumers. Overlake sponsors health and safety classes, with topics ranging from childbirth preparation and parenting to senior care. The hospital also sponsors community health events and screenings for the general public. In October 2010, Overlake held its third annual Eastside Vitality Health Fair, performing free health screenings for more than 1,000 people. Screenings included blood pressure checks, blood glucose testing, cholesterol tests, stroke assessments, peripheral artery disease screenings, bone density screenings, and skin cancer checks. In addition, guests attended informational lectures by physicians and medical experts on topics including cancer prevention, cardiovascular health and sports medicine.

CONNECTING WITH PATIENTS IN NEW WAYS

Overlake is committed to utilizing technology in new ways to further improve communication and convenience for patients. With more people using the Internet as a source of information and convenience, Overlake is increasing its social media and online presence to further engage patients and their families. This past year Overlake became the first healthcare facility in the Seattle area to post Emergency Department (ED) wait times on its website. ED wait times can be easily viewed using a computer, smart phone or any web-enabled device. The hospital also increased its social media presence by utilizing Facebook and Twitter to keep patients informed on the latest news, answer questions and post health and nutrition information.

INVESTING IN INFRASTRUCTURE FOR THE FUTURE

This past year Overlake brought a high level of attention to developing a fully integrated Electronic Medical Records (EMR) system. Overlake will work in 2012 and 2013 to implement a hospital-wide EMR that will connect all of Overlake's facilities, providers, and, ultimately, patients. Having an integrated EMR in place will allow physicians and nurses the time to focus even more on what sets Overlake apart – delivering exceptional patient care. Additionally, patients will have access to their own medical records which can be viewed from their home, office or any location convenient to them. This powerful system will give the hospital the solid foundation to continually raise the bar on providing superior patient care.

BUILDING TECHNOLOGICAL EXPERTISE

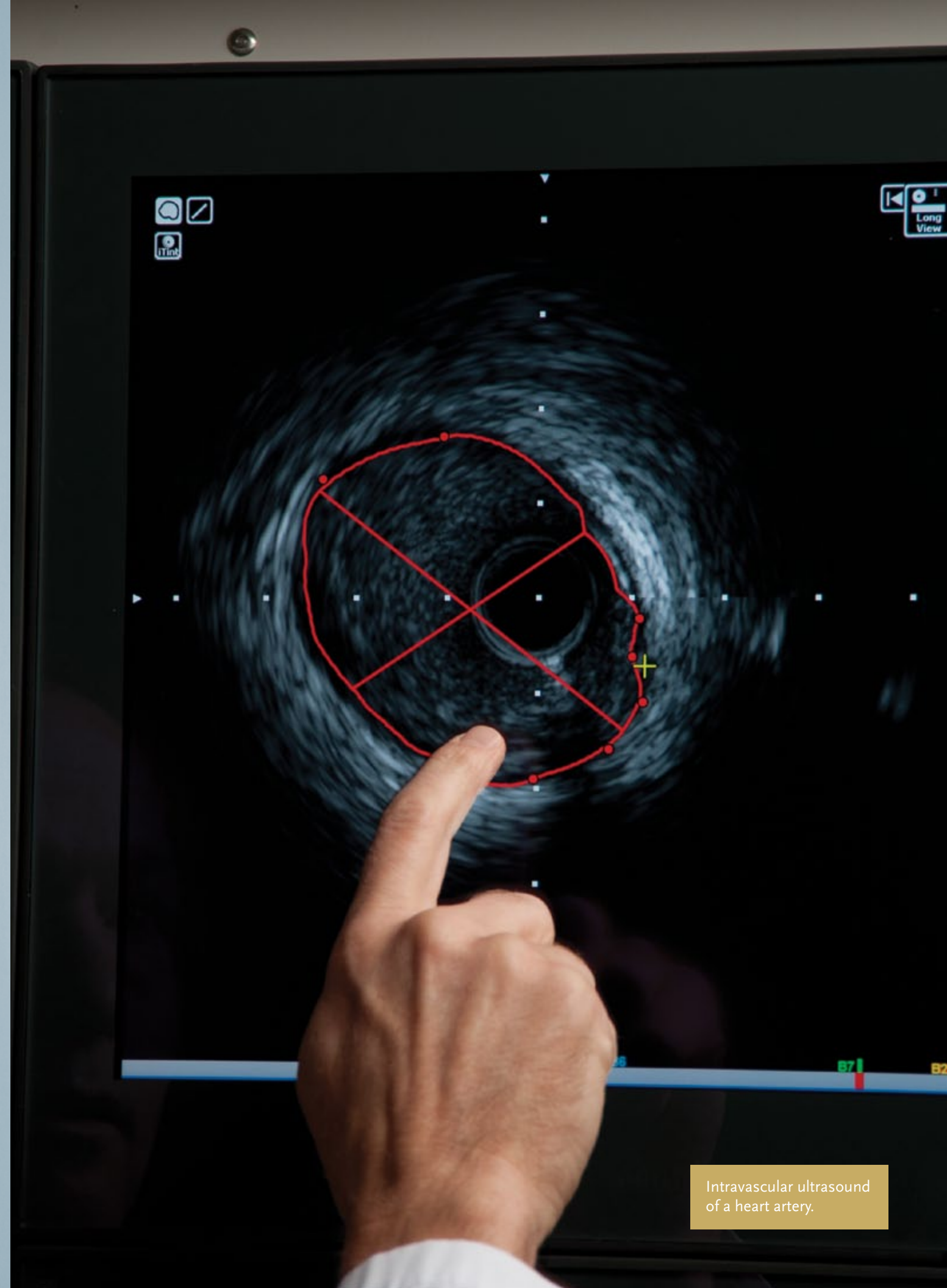
In the world of medicine, innovation is a constant. Overlake takes pride in adopting best practices and proven advancements. That's why the hospital uses the latest treatment techniques and invests in state-of-the-art technology. Overlake's Medical Imaging Department offers patients access to some of the most technologically advanced MRI equipment in the Puget Sound area. Overlake recently acquired a second MRI scanner that is the most powerful

on the market. With this new scanner adjacent to the Emergency and Trauma Center, patients and physicians have easy access to a comprehensive range of imaging studies, seven days a week.

SHOWCASING LEADING-EDGE TECHNOLOGY

Due to the generosity of donors, last year Overlake was able to make a significant investment in its surgical center with the purchase of a da Vinci® Surgical System. The da Vinci is a sophisticated robotic device that offers surgeons a less invasive alternative to traditional open surgery. Overlake initially used the da Vinci system for gynecological and urological surgeries, and is now using it for patients undergoing bariatric, or weight loss surgery. The da Vinci's robotic arms give surgeons greater flexibility with their surgical tools and better precision when performing complex movements in very small spaces. In addition, the system's high-definition camera offers an up-close 3-D view of the surgical field which is a significant improvement over the 2-D view provided by traditional laparoscopic equipment. Patient benefits include smaller incisions, less scarring, reduced blood loss and pain, and faster recovery time. Patients are able to recover and return to work and home life more quickly.

These investments in programs, technology and growth will keep Overlake at the forefront of medicine and deliver the highest quality medical care in a more integrated, collaborative and efficient way. These qualities allow the hospital to remain a financially strong and independent organization, providing value to the patients and community far into the future.



Intravascular ultrasound of a heart artery.

DONORS

Overlake Hospital Foundation and Auxiliaries raise funds to support Overlake's vital programs, strengthening our commitment to Medical excellence every day™. We extend our heartfelt gratitude to each of our donors. The following individuals, corporations, and organizations made contributions of \$500 or more during the 2011 fiscal year, July 1, 2010 to June 30, 2011.

\$250,000+

Anonymous (1)

\$100,000 - \$249,999

The Anderson Foundation
The Regence Foundation

\$50,000 - \$99,999

Anonymous (1)
The F. Danz Foundation
Patty Edwards
Sterling Realty Organization

\$25,000 - \$49,999

Brown Bear Car Wash
Fred and Joan Burnstead
Chuck and Evie Foster
KeyBank
Medina Foundation
QBE
John F. and Julia P. Shaw
Silver Family Foundation
Lester and Bernice Smith Foundation

\$10,000 - \$24,999

Arthur J. Gallagher Risk Management Services, Inc.
Bob and Clodagh Ash
Dr. William C.C. Crenshaw
David N. Cutler
Dr. David R. and Jane Davis
Denali Advanced Integration
Stephen and Nancy Elop
First Choice Health
David and Patricia Giuliani
GLY Construction, Inc.
Group Health Cooperative
Harris Private Bank
Healthcare Realty
Craig and Linda Hendrickson
Ted and Jodi Herb
Dr. Vu and Truc Hoang
Paul and Mary Hosoda
Estate of Golden E. Jacobson
Kemper Development Company
Sandra La Haye
Byron and Alice Lockwood Foundation
Jerry and Sarah Mathews
Matrix Anesthesia, P.S.
Jim and Paula Melby

Microsoft
Ogden Murphy Wallace, PLLC
Overlake Imaging Associates
Parker, Smith & Feek, Inc.
Marie Therese Pero
Puget Sound Energy
Colin and Manio Radford
Skip and Debra Rowley
Estate of Jean Lenhart Sanborn
James and Janet Sinegal
Symetra Financial Corporation
Jason, Gloria and Madison Thompson
University Mechanical Contractors, Inc.
Thomas C. Wright Foundation

\$5,000 - \$9,999

Alaska Airlines
Aldrich & Associates, Inc.
Roger and Mary Anderson
Bank of America Foundation
Barbara Berkau and Cary Given
The Boeschoten Foundation
Chevron Corporation
Chubb Group
Ned and Haleh Clapp
Greg and Kelly Collins
Phil and Cheri Corneil
Mike and Dana Daher
Carolyn L. Day
Jim and Candace Doud
Penny and Leslie Ellis
Emergency Physicians at Overlake
Ted and Geri Frantz
Graham and Carol Gaiser
Gallagher Benefit Services, Inc.
Robert Gerken
The Benjamin and Margaret Hall Charitable Lead Trust
Richard and Marilyn Herzberg
Peter and Diane Kirkman
Terry and Linda Mahaffey
Gary and Dianne McLaughlin
Mary Warjone Mott
Paul J. Myerson Trust
Victor and Mary Odermat
John and Betty Parks
Proliance Surgeons
Property Development Corporation
Puget Sound Security, Inc.
Renton Collections, Inc.
Rowley Properties, Inc.

David and Becky Schultz
The Seattle Foundation
Dr. Scott T. Shih and Dr. Martha Spieker
Dr. Roger and Phyllis Stark
Sweeney Conrad, P.S.
Systems Technology Associates, Inc.
Eric Teshima
Taylor, Gregory, Broadway Architects
Thurston Charitable Foundation
Trane
Univar USA Inc.
Wells Fargo
Robert and Peggy Wilkerson

\$1,000 - \$4,999

Anonymous (8)
Acco Engineered Systems
Dr. Shelley Agricola
Akvelon, Inc.
Joan Albee
Chuck and Jody Albright
John and Kari Alexander
Rey and Maria Alvarez
Andelcare
Andersen Construction Company
Carolyn Anderson
Robert Anderson
ARAMARK Healthcare
ATS Automation
Jason and Maryam Aycox
Dr. Ray and Jennifer Baker
Banner Bank
BarclayDean Inc.
Brittany F. Barker
Peter Barnes
Diana and R. Michael Barnes
Patty and Jimmy Barrier
Barrier Motors, Inc.
William and Kate Bates
Kristine and Steven Becker
Robert and Marilee Beckes
Ron and Patty Bedient
Bella Photography
The Bellettini/Fairwinds Redmond
The Bellevue Club
Bellevue Ear, Nose & Throat Clinic, Inc.
BELV, LLC
Gail Beran
Berntson Porter & Company, PLLC
Norris and Meta Lou Bevan

Acar and Kazuko Bill
Howard and Sarah Binner
Donald and Mindy Black
Public Financial Management, Inc and PFM Asset Management LLC
Darren and Kay Bowman
Lisa Brock
Steve and Jenny Brooks
Dr. James and Mary Jo Bruckner
Richard A. and Jennifer M. Bryan
Carlos and Mely Cagaanan
Ray and Anne Carr
Cascade Vista
CCS Digital Printing Inc.
Donald Charles
Elaine Chong
David and Valerie Chrusciel
Andrew and Lesley Clapham
Dr. Rick and Mary Clarfeld
Clark Nuber P.S.
Thomas and Deborah Cleveland
Mark and Catherine Cole
Jeffrey and Marilee Combs
Common Folk Co.
Dennis and Jan Conrad
Dr. Kathryn Crossland and Dr. J. Walter Smith
Crothall Healthcare, Inc.
Mark and Kay Daughtry
Dorothy J. D'Ewart
Mr. and Mrs. Matthew Dubbs
Bill and Misty Durbin
Milinda Dwyer
Eastside Pathology, Inc.
ECG Management Consultants, Inc.
Wesley and Joanne Eckert
Peter and Aranca Ehrenwald
Kyril Faenov and Lauren Selig-Faenov
Dr. Barry and Kristi Feder
Stephanie and Eric Ferguson
W. Alexander and Janine Florence
Joe and Karen Fowler
Fowler Financial Group
Betty and Kemper Freeman, Jr.
Genentech, Inc.
Robert and Penny Genise
Dr. Kathleen Gibson and Daniel Klusman
Gunter and Evon Gilberg
Peter and Julie Glidden
Elizabeth Glithero
Luis Gonzalez
Donald Graham
The Hahn Family Foundation
Dr. Thomas and Cheryl Hansen
Dolores Harrington
Timothy Fitzpatrick and Dr. Kristi Harrington
Alice and York Harris
Scott and Darel Harrison

Jeff and Candace Havens
John and Linda Hayhurst
Larry and Patty Hebner
Hellam, Varon & Co., Inc. P.S.
Justin and Catherine Hendrickson
Hermanson Company, LLP
Jason and Caitlin Moulding
Ben and Hannah Hittleman
Dr. Frederick and Gloria Hoedemaker
Nora and Douglas Hoisington
The Holzman Foundation, Inc.
Ernie Hood and Lisa Rosenblatt
P. J. Hough and Mary Lydon
HSBC Bank
Hudson Bay Insulation Company
INX
Issaquah Nursing and Rehabilitation
IVOXY Consulting, LLC
Drs. Pierre Jerome and Janna Patterson
Rajesh Jha and Sudha Mishra
Todd and Lynette Johnson
Dr. Richard and Lynn Kaner
Kelly Chandler Photography
Key Foundation
Ragan Kim
Jeffery A. Kirby
Robin Knepper
Dr. David Knoepfler and Gosia Mazewska
Drs. Kelan and Elizabeth Koenig
Mike and Jackie Kraemer
Brian and Lynn Kuske
Laird Norton TYEE
Lake Washington Vascular, PLLC
Michael A. Langley
Dr. Kenneth Lee and Kelley Kim
Janice Levis
Kirk and Shawn Lilley
Diane and David Litzenberger
MacDonald-Miller Facility Solutions, Inc.
Brian Aust and Dee Mann Aust
Jim and Robyn Swain
Tom Marra
Dr. Stephen and Connie Marshall
Mathes Design
James and Pam McBain
McKinstry Company
Mercer
Drs. Thomas Miller and Carey Julian
Kamyar and Sasha Moinzadeh
Kimberly Moore
Marilyn and Reid Morgan
Mortenson Construction
Pat and Kristi Nangle
NBBJ Architecture
Karl and Tina Neiders
Dr. John and Nancy Nelson
Steve and Toni Nicholes
Nintendo of America Inc.

Nordstrom, Inc.
Dr. Donald and Naomi Nothstein
Martha Olson
PACLAB Network Labs, LLC
Vasant Palisetti
Tom Parkhurst
Hadi and Negar Partovi
Ash and Shilpi Patel
Pathology Associates
Medical Laboratories
Mitch Murri and Linda Pawson
Dr. Sally Browning and Dr. Richard S. Pelman
Lorna Perez
Perkins Coie LLP
Physicians Insurance
David and Lisa Pim
Gerald and Jane Pittenger
Point B
Alison Power
Premera Blue Cross
David and Barbara Prutzman
Puget Sound Blood Center
Darin Puryear
Jeanette P. Quaeck
Mark and Jane Quehrn
Mohammad Rahman
Dr. Richard Rand
Tom and Sue Raschella
Rao and Satya Remala
Bruce and Gail Richards
John and Sarah Rindlaub
Joe and Brenda Rinehart
William and Meredith Rogers
Steve Rowell
Russell Matching Gifts
Paul Ryan
Michael and Heather Sandoval
Pam Sanger-Denning
The Schoenfeld-Gardner Foundation
Shirley Schumacher
Dr. James and Marsha Seeley
Bruce and Nicki Seiler
Mackenzie Skene and Suzanne Lusnia
Dr. Eric and Yolanda Smith
Noel and Petie Smith
Sue and Greg Smith
Saloni Sonpal
Mary Spillane
Spring-Neuhauser Foundation
Sandy Staples-Hector
Jim and Molly Stearns
James and Julie Sun
Superior Underwriters
Angela and Carl Sutter
Pat Swenson
Dr. Michael and Peggy Swistak
The Yao Yuan Sze Foundation
Tateuchi Center
Temcov Foundation

Deborah and Frank Thiel
Gifford Thomas
Scott and Keren Thomson
Andrew and Cindy Tokar
June Toll and John Gorman
Robert and Kathy Trimble
Marlene and Brian Tuttle
Bertrand Valdman
Michael and Carol Wade
Bob and Joan Wallace
Wallace Properties
James and Christine Warjone
Washington Air Reps, Inc.
Jeff Fisher and Amy Weaver
Wellspring Group P.S.
Cathy Whitaker Klick and Alan Klick
Chuck Williams
Dr. Henry and Gwen Williams
Dr. and Mrs. George R. Winters III
TJ and Carole Woosley
Thomas and Purita Yamakawa

\$500 - \$999

Anonymous (5)
Judy Albrecht
Laura A. Allison
Sundra Anderson
Ying-Hao and Angela Au
David Aubrey
Angela Avery
Dr. John and Janis Baldwin
Debra Barbee
Valerie Barrs-O'Mara
T.D. Sam and LuAnn Baxter
Dr. Brent Benjamin and
Alejandria Tapia
Todd and Julee Bennett
Alec Berntson
Shanti and Venkat Bhamidipati
Lawrence and Anna I. Blakely
Scott and Robin Blankenship
Dr. Clayton and Anne Marie Brandes
Ellie and Dave Brasher
Dr. Daniel and Patricia Brzusek
Joseph and Christine Callans
Cardinal Health
Care Medical Associates PLLC
Sue Carlson
Tim and Dana Chace
Eunice Chaffey
Chico's FAS, Inc.
Dr. J. Tom and Ann Marie Collier
Mary Claire Cook
Dr. William and Frances Crouse
Jody Cunningham and Mark Mennella
James and Karen DePasquale
Douglas and Karen D'Ewart
Drs. Douglas Dicharry and
Kathryn Koelemay
Laura and Blair Dillaway

Lewis and Susan Edelheit
Mark Eggleston
Theron Eichenberger and
Jennifer Winter
Employees Community Fund of
Boeing Puget Sound
Michael and Ann Erikson
Nancy Fallgren
Fouad Farhat and Maryam Aminian
Robert and Joanne Fay
John Ferguson
Bob and Kristina Fordice
Mark and Jeannie Forrest
Deborah Freng and Joseph C. DeCuir
Karin Fretheim
Jon and Jen Friedrichsen
Gordon Gilbert, Jr.
Mario and Donna Giordano
Thomas and Ann Gores
Don and Roejean Grant
John Owings and Patricia Hamilton
Whit Hamlin
Scott and Jeannie Harrington
Le Beau Harrow
Michael and Alicia Hatch
Christy Hayward
George Heidorn and
Margaret Rothschild
James and Joy Hereford
Daniel and Merisa Heu-Weller
Stephen Hilbert
Becky and Kim Hood
Shirley M. Hvalsoe
Barbara Jacobsen
George and Dale Johnson
Dr. Kalle Kang
Jim Karambelas
Inger Keeler
Lee Keller
Lee and Anne Kilcup
Judith King
Tiffany Koenig and John Ostolaza
Christian and Aase Kongsore
Denise S. Kraft, MD
Dr. Bernard and Renee Kreilkamp
Jiyoung and Young Lee
Dr. Bryan and Carol Leyton
Avon Lok
Kirsten MacKay
Drew and Kari K. Magill
Dave Mangone
Michael and Lindy Martz
Dr. Patrick and Jenner Mathiasen
Harry and Gisele Matthews
Catherine and Steven McLamb
Dr. Sandy Melzer and Ellen Evans
Joanna Montgomery and Rick Price
Dr. Dudley and Deborah Moorhead
Lisa Morten
Dr. Sam and Susie Naficy
Judy Nelson

Jerry Ng and Kim Dahlman
Dr. David and Barbara Nordin
Tim and Amy Owens
Pavlishin Family
Michael and Janette Pavone
Dr. James and Carolyn Pelton
Steve and Deana Perovich
Roger and Cynthia Petrie
Phil Gamble & Associates, Inc.
Dr. David and Mara Pitkethly
John and Priscilla Privat
Bruce and Celia Pym
Dr. Tara Reimers
Owen Roberts
Patrick and Pam Rock
Jim and Peggy Rodrigues
Harold and Linda Rose
Jason Rosecrans
Van and Judith Ruitter
Michael H. and Lori D. Russell
Beth Rutherford
Douglas and Donna Sackville
Dr. Michael and Shelly Sailer
Joseliza San Agustin
Brian and Dixie Sandall
Dr. Robert and Susan Sandblom
Ty and Jenny Schultz
Mary Jo Selg
Bill Senta
Karla Shultz
Russ and Muffie Signalness
Patrice and Hilary Simard
Derrick Simonds
Kimberly Smith
Don and Nancy Stenquist
Marjorie Sullivan
Robert Swegle
Susan Tabor
Tanner Companies, LLC
Patrick and Frances Taylor
Sue and Keith Tibbles
Tyler and Amy Tonkin
John Tucker
Andy Verprauskus and
Michaelanne Ehrenberg
William and Nancy Vieser
David and Stephanie Walter
Andrew and Kristen Wappler
Susan Warner-Murray
David Schooler and Kristen Webb
Perry and Robin Webster
Elizabeth Wheelwright
Elaine Wilk
Tony and Cindy Williams
John Wishart
David Wu
James Yowan
Cha Zhang

TRIBUTES

We recognize the following people for whom a gift has been made in their honor or memory.

GIFTS IN HONOR

Kermit Anderson
Dianne Arensberg
Clodagh Ash
Betty Ann Ash
Eileen Ash Arthur
Mary Lynn Baird
Anne Baseler
Caralee Bell
Regina Bennett
Debbie Brasei
Sharon Bridges
Cancer Center Auxiliary
Marie Cannon
Dr. Kevin Case
Cynthia Child
Mary Clarfeld
Dr. Rick Clarfeld
Lee Ann Coles
Jan Conrad
Michele Conrad
Dr. Kathryn Crossland
Kathleen Dennis
Dr. Joseph Doucette
Dr. Mitra Ehsan
Dr. Gregory Engel
Elora Erickson
Kristi Feder
Sally Fitzgerald
Chuck Foster
Evie Foster
Leeda Ghassemi
Sheryl Gudaitis
Patricia Hamilton
Thomas Hansen
Jean Harris
Catherine Haynes
Dr. Deborah Haynes
Mary Hintz
Hannah Hittleman
Desiree Hobson
Marilyn Holen
Della Houston
Mingwah Hsiao
Marion Huizinga
Gordan Iverson
Sharon Kaye
Elizabeth Knopf
Dr. Bryan Leyton
Gary Livingston
Donald Lovett
Meagan MacPhee
Linda Maracich
Doug Martin
Pat Martin
Amy McGann

Veronica Mickelsen
Mary Mitchell
Sandy Myerson
Gloria Newman
Overlake's NICU Nurses
Dr. James Pelton
Mary Pike
Judy Porter
Helen Rand
Dr. Sandra Rice
Pam Rock
Becky Rodda
Lori D. Russell
Dr. Lester Sauvage
Ryan Shimotakahara
Suzanne Shultz
Muffie Signalness
Jean Simmons
Irene Small
Dr. J. Walter Smith
Dave Sorocco
Kathleen Stenbakken
Toni Stevens
Cathy Sutcliffe
Lynne Sweeney
Yao Sze
Renee Teshima
Ann Thomas
Rob Thomas
Madison Anne Thompson
Keith Wadsworth
Lorraine Weltzien
Dr. Henry Williams

GIFTS IN MEMORY

Leslie Adsit
Purushottam Agashe
Margrethe Andersen
Victoria Anderson
Frank Asbury
Ellen Asbury
Vicki Ashberg
Michael Asher
Allen Au
James Avila
Leonard Backer
Agnes Baer
Jacqueline Balbiani
Gil Bannerman
Virginia Beer
Carter Beese
Boos-Weltzien Family
Donna Kay Bostwick
James Brasher
Stephanie Brown
Robert Brown

Margaret Bryant
Billy Bryant
Gail Callan
William Calvert
Barbara Campbell
Clifford Chadwick
William Chappelle
Dr. Arthur Clemett
Bonnie Betcone Cole
Rachelle Conrad
Maxine Conrad
Roberta Corets
Dr. William Crenshaw
William Crossland
Jack Cunningham
Marvin Dashefsky
Frank Davies
Dr. Allen Doan
Edward Dobrick
Carla Donerstag
Bill Doucette
Maurice Douthit
Jeri Dowidar
Joan Doyle
John Edwards
Babette Fisher
Margaret Fitzgerald
Dale Frank
Marianne Frodesen
Paul Gibson
Lawrence Goodrich
Harriet Grau
Mildred Grella
Gary Hansen
William Hanson
Robert Harrow
Marjo Hiemstra
Matt Higgins
June Higgins
Edward Hittleman
Wan Hsi Hsiao
Judy Isted
Dr. Howard Jensen
June Johanson
Charlotte Kamm
Mary Lou Keller
Anna and Friedrich Kienzle
Kumi Kilburn
Rosalie King
Dr. Peter Knoepfler
Melvin Knorr
Debbie Kuhn
Margaret Langley
Kenneth Langley
Keith Larson
Helen Lawson

Gordon Legg
John Leslie
Jennette Logue-Sheldon
Don Lundberg
Rodger and Elizabeth Marquardt
Reese Martin
Kathleen McClinton
Leroy McCormick
Lee McDonald
Cheryl Miller
Richard Mollner
Harvey Moore
Mary Morgan
Dr. Paul Myerson
Buddy Newman
Lois Nordwall
Cory O'Brien
Joseph O'Neill
Dick Ortiz
Kathleen Ouma
John Owings
Helen Panas
Dr. Robert Pennington
Leslie Peterson
Marjie Peterson

Sonja Potter
Betty Pritchard
Margaret Raile
Mercedes Ramirez
Jack Reynolds
Lesley Robinette
Richard Rosenthal
Bob Rosenthal
Donald Ross
Paul and Kitty Rosted
Jim Roupe
Nathaniel Ruder
Marjorie Ruggles
Jeanette Ryan
Bertha Rylander
Corwin Schott
Sibyl Schultz
Ella and Reuben Schumann
Selma Schwartz
Dick Seltzer
Audrey Sharp
Amy Smith
Catherine Ann Smith
Richard Snavely
Laurie Starck

Betty Stoller
Francis Sult
Dr. Kuo-Chung Sun
Kerry Sussex
Phillip Sussman
Lucille Sze
Bridget Thompson
Barbara Thorson
Steven Todd
Guy Townsend
Peggy Troung
James Turner
Jerome Vinikow
Nancy Voegele Robbins
Phyllis Ward
Craig Watjen
Donald Weaver
Floyd Weisser
Delphine Whalen
Dick and Julie Williams
Irene Wishart
Jane Wood
Dr. George Wood

Overlake acknowledges our generous contributors on our Donor Recognition Wall off the South Tower lobby. For more information about making a contribution, a tribute or planned gift, or to volunteer, please contact the Foundation & Auxiliaries at 425-688-5525 or foundation@overlakehospital.org.

2011 HOSPITAL BOARD OF TRUSTEES

Bertrand A. Valdman, Chairman
Larry Hebner, Immediate Past Chairman
Cecily Hall, Board Chair Elect
John K. Murphy, J.D. M.S, PA-C, EFO, FACC, Secretary
Patricia Bedient, Treasurer
J. Walter Smith, MD, Chief of Staff
Tom Miller, MD, Chief of Staff Elect
Craig L. Hendrickson, President/CEO
Robert Campbell
Tom Cleveland
Gregory Collins
Jim Doud
Patty Edwards
Janine Florence
Kemper Freeman, Jr.
Kathleen Gibson, MD
John B. Hayhurst
Ken Johnsen
Douglas T. Martin
Russell Stockdale

2011 FOUNDATION BOARD OF TRUSTEES

Linda Mahaffey, Chair
Peter Glidden, Chair Elect
Philip Corneil, Secretary
Craig Hendrickson, President/CEO
Shelley Agricola, MD
Roger Anderson
Gregory Collins
Ned Clapp
Philip Corneil
Jody Cunningham
Peter D. Glidden
Alice Harris
Ted Herb
Tiffany Koenig
Linda Mahaffey
Mary Mott
John Nelson, MD
Mark Quehrn
Sue Raschella
Charles H. Royer
Shirley Schumacher
Susan M. Smith
Roger A. Stark, MD
Peggy O. Swistak
Jason Thompson
Jim Wigfall
T.J. Woosley

ENDOWMENTS

The donors who have established and contributed to the following named endowments have ensured Overlake's programs and services will be available now and for future generations. We gratefully acknowledge their support.

Robert W. and Clodagh C. Ash Endowment for Cancer Care
Lucille Botting Senior Care Endowment
Helen L. Bucey Endowment Fund for Surgical Services
Dr. Joseph W. Doucette Cardiac Care Endowment Fund
Leland Ellis Memorial Fund
R. Scott Hardie Endowment for Oncology Clinical Education
Catherine Landweer Endowment for the Advancement of Nursing and Clinical Oncology Education
John and Hazel Matheson Endowment for the Advancement of Nursing and Clinical Education
Warren J. Razore Endowment
Reigert Chest Pain Center Endowment Fund
Sanderson Family Endowment Fund for Uncompensated Care
Catherine Ann Smith Memorial Endowment for Senior Care
Edna and Sigrud Steen Endowment
Trailblazers Fund for Medical Excellence
Dr. M. Marvin Wallace Endowment Fund
The Gene and Louise Wilson Endowment for Oncology

The Foundation wishes to thank all those who have made a legacy gift by naming Overlake as a beneficiary of their will, trust, insurance policy, annuity or retirement plan. For more information about making a planned gift, please contact plannedgiving@overlakehospital.org.

2011 AUXILIARY BOARD OF TRUSTEES

Diane Litzenberger, President
Patricia Wangsness, Vice-President
Kristi Feder, Secretary
Jan Granston, Treasurer
Phyllis Stark, Membership Chair
Patty Edwards, Representative to Hospital Board
Mary Mott, Representative to the Foundation Board
Leah Gray
Lynette Johnson
Bärbel Kappes
Sandy Myerson
Maureen Schroder
Karen Sehrer
Deb Thiel
Lorraine B. Weltzien, Historian

AUXILIARIES

Cancer Center Auxiliary
Ed Fitzgerald Auxiliary
Elsie Barker Cancer Care Auxiliary
Gift Gallery Auxiliary
Jill Wikstrom's Dreamcatchers Auxiliary
Roger Stark Cardiac/Stroke Auxiliary
Sonja Potter Senior Care Auxiliary
Shirley Goodman Behavioral Health Auxiliary

EXECUTIVE LEADERSHIP

Craig L. Hendrickson, President & Chief Executive Officer
Gary McLaughlin, Executive Vice President of Finance & Chief Financial Officer
David W. Schultz, Executive Vice President & Chief Operating Officer
Jody Albright, Vice President of Information Services & Chief Information Officer
T.D. Sam Baxter, Vice President of Professional Services
Lisa Brock, Vice President of Human Resources
Richard Bryan, Vice President of Systems Change Management
Alan Ertle, MD, Chief Medical Officer and Vice President of Network Development
David Knoepfler, MD, Chief Medical Information Officer
Caitlin Hillary Moulding, Vice President of Strategy & Marketing
Molly Stearns, Vice President of Fund Development and Executive Director of the Foundation
Marlene Tuttle, Director, Medical Staff Services/Health Information Management
Cathy Whitaker, Vice President of Patient & Care Services & Chief Nursing Officer

VOLUNTEERS

We wish to thank the many volunteers who so generously give their time, energy and talents to support the mission of the Foundation and Auxiliaries.

Jenny Adams	Lucille Friedman	Patti Murphy
Deb Alexander	Areanne Fuentes	Isa Nelson
Mary Anderson	Joy Gamble	Gloria Newman
Lisa Antush	Sue Gill	Steve Nicholes
Marissa Aragones	Dorothy Goddard	Faye Niiyama
Clodagh Ash	Shirley Goodman	Barbara Nufeld
Connie Atteberry	Jan Granston	Mary Odermat
Heidi Auvil	Leah Gray	Avril Pattenaude
Pauline Bach	Ontie Griebel	Steph Percy
Hella Backmann	Cyrus Habib	Marilyn Peterson
Jan Baldwin	Irma Hall	Angela Pifer
Brittany Barker	Monika Hall	Allison Potter
Patty Barrier	Cecily Hall	Jackie Potter-Scumniotales
Marla Beck	Yvonne Hansen	Gloria Prins
Carol Beeks	Carole Hanson	Manio Radford
Dr. Kathleen Bernhard	Josie Haynes	Jeab Raleigh Ueatawan
Frannie Blessing	Amy Hedin	Gail Ratley
Doris Bond	Holly Hemmann	Carolyn Riss
Rena Boyd	Steve Hilbert	Charlene Roberts
Ruth Brown	Todd Hodgen	Bev Roberts
Mary Jo Bruckner	Preben Hoegh-Christensen	Lynne Robinson
Pauline Buhler	Ruth Hoegh-Christensen	Joan Ross
Dr. Raj Butani	Della Houston	Jessica Rubie
Kellie Caffey	David Hovind	Helen Ryan
Mely Cagaanan	Shelley Hovind	Ann Ryles
Kathryn Calvert	Marion Huizinga	Lisa Sacia
Dottie Calvert	Diane Jenkins	Phyllis Schaeffer
Shannon Campbell	Lynn Johnson	Shirley Schisler
Shannon Casaschi	Karly Johnson	Cindy Sherry
Susan Castle	Nicole Johnson	Theresa Siewert
Rachele Cawaring	Bärbel Kappes	Lynette Smallwood
Eunice Chaffey	Jeanine Kimble	Petie Smith
Ming Cho	Jeff Kirby	Noel Smith
Colleen Clancy-Eastman	Doreen Kowal	Sandy Staples-Hector
Dr. Carol Clemett	Faye Kraft	Pat Swenson
Alix Campton	Marion Krueger	Jennifer Tada
Jan Conrad	Karol Krueger	Rae Marie Tellefson
Dolores Costales-Johnson	Brian Kuske	Deb Thiel
Betty Coyle	Pelkey Lama	Molly Thronson
Dr. Dave Davis	Diana Lanspa	Kathy Thurston
Carol Day	Stella Lee	Maria Tober
Kathy Dennis	Valerie Lee	Ozzie Traff
Ilene Dessler	Carolyn Lewis	Jo Trudell
Matt DiJulio	Carol Leyton	Eva Vance
Mary Dodds	Carole Linse	Raffy Vinoya
Carol Doré	Erin Lowe	Harriet Wallendahl
Jim Doud	Ellen McArdle	Patricia Wangsness
David Doud	Alicia McCann	Betty Watson
Mildred Douthit	Betty McDonald	Janet Weisman
Molly Elberier	Cathleen Mechkoff	Lee Wheeler
Wilma Enyeart	Warren Michelsen	Cathy Whitaker-Klick
Alex Florence	Pauline Milo	Margaret Wojcicki
Paula Fortier	Mary Mitchell	Marian Woosley
Evie Foster	Deborah Moorhead	Sharon Zuvela
Tom Fowler	Marilyn Morgan	
Deborah Freng	Antje Muldoon	

FINANCIAL REVIEW

Patient Revenue	\$ 405,087,000
Other Operating Revenues, Income, Contributions	\$ 20,813,000
Total Revenues	\$ 425,900,000
Expenses	\$ 391,107,000
Net Income	\$ 34,793,000
Uncompensated Care and Community Services	\$ 17,000,000

Admissions	21,235
Patient Days	71,184
Outpatient Visits (including clinics)	235,898
Surgical Patients	13,769
Average Patient Stay	3.36 days
Births	4,029
Physicians	79
Employees	2,643
Volunteers	893
Auxiliary members	170
Donors	2,630

Overlake Hospital Medical Center's Vision

To provide exceptional quality and compassionate care to every life we touch.

OVERLAKE HOSPITAL MEDICAL CENTER

1035 116th AVE NE BELLEVUE, WA 98004

(P) 425-688-5000

(F) 425-688-5959

WWW.OVERLAKEHOSPITAL.ORG