

OVERVIEW

A newsletter for friends of the Overlake Medical Center Foundation

In This Issue

Cancer Center Grand Opening	Page 1
The Apprentice	Page 2
Brain Waves	Page 2
Palliative Care Expansion	Page 3
Sponsor Thank You	Page 3
Tree of Hope	Page 4

Upcoming Events

Brighton Collectibles

Purchase select Breast Cancer Awareness items in October and benefit Overlake!

Recoop Spa

November 1 Pulse! event, 6 to 8 pm, featuring wine, appetizers, chair massages, and more. 10% of gift card purchases that night will go to Overlake. All month, customers can donate to Overlake and be featured on the spa's giving wall.

For information on joining Overlake's Pulse! network, please visit overlakehospital.org/pulse.

Bellden Cafe

Bellden has designated Overlake their December - February nonprofit partner. Stop by for lunch!

Cancer Center GRAND OPENING!

Together, you contributed \$10 million to help build a world-class Cancer Center in your community, and you get to take pride in the outcome: a beautiful, healing place where cancer care is a *human* experience, not just a clinical one.

At the grand opening of the Overlake Cancer Center on September 14, many of the people who gave their time, skills, dollars, and good wishes turned out to see the results. The

program included remarks by Cancer Center Medical Director Dr. Kristi Harrington, campaign co-chair Clodagh Ash, patient Kathryn Beard, Overlake CEO Mike Marsh, and Bellevue mayor John Stokes.



Ribbon cutters, from left: Kathryn Beard, Linda Mahaffey, Clodagh Ash, Jan Conrad, Dr. Kristi Harrington, Mike Marsh, John Stokes.



An additional ceremony honored retired Overlake oncologist Dr. Katherine Crossland, for whom the new infusion suite is named.

The Cancer Center that you helped build is already making a difference for patients, who have all of their appointments and providers in one location, with compassionate navigators to help them every step of the way. You did it. Thank you.

David and Patricia Giuliani (center and right) donated \$1 million to the Cancer Center campaign. They asked to name the infusion suite in honor of Patricia's oncologist, Dr. Crossland (left).

Office of the Foundation & Auxiliaries

Phone: 425-688-5525

Fax: 425-688-5642

General Inquiries:
foundation@
overlakehospital.org

Mailing address:
1035 116th Ave NE
Bellevue, WA 98004

Physical address:
Overlake Medical Pavilion
1231 116th Ave NE, Suite #500
Bellevue, WA 98004

www.overlakehospital.org/support

Thanks for Your Support!

If you would like to opt out from receiving any future solicitations from Overlake Medical Center Foundation, please call 425-688-5525 or email solicitationopt-out@overlakehospital.org.

Apprenticeship is a Win/Win

Overlake's Medical Assistant (MA) Apprenticeship program, sponsored by the Washington Association of Community and Migrant Health Centers, enables students to get on-the-job-training to move into MA roles without the expense of traditional training programs.

Students are required to complete 2,000 hours of hands-on training under the watchful eye of an experienced coach, plus 364 hours of coursework. At the end of the 12-month program, they are fully competent and certified Overlake MA's.



Patients love Cynthia's big smile and gentle touch.

"What a wonderful blessing to work in a profession that can bring happiness to others," says Cynthia Ramaley, a current student in the program. "I never could have had this experience or the opportunity to achieve my goal of becoming a certified medical assistant without this opportunity from Overlake."

Brain Waves

At **Bandage Ball 2017**, you came out to support Overlake's Neuroscience Institute. Here's what you accomplished:

- **Functional Magnetic Resonance Imaging**

The new fMRI machine enables our doctors to learn more about how a patient's brain is functioning.

- **Epilepsy Program**

Your support is helping Overlake create a new Epilepsy Program--the first on the Eastside.

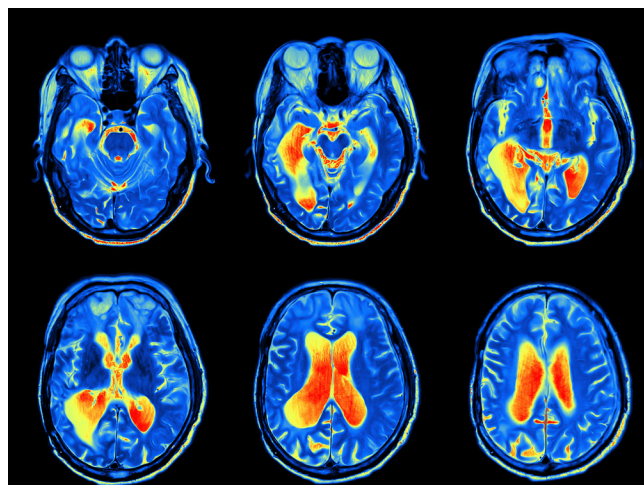
- **Headache Clinic**

Slated to open in 2018, Overlake's Headache Clinic will provide advanced on-site treatment for severe pain so you can feel better quickly and get back to your busy life.

- **Telestroke Medicine**

Also debuting in 2018, telestroke medicine uses the power of partnership and technology to ensure that individuals who come to the hospital with stroke symptoms can be evaluated by a specialist at any time of the day or night.

Funds raised at Bandage Ball 2017 will continue to support Neuroscience Institute initiatives into the next year. Thank you!



Palliative Care Expands to Include Outpatient Services

When you or your loved one has a serious illness, palliative care offers an extra layer of support to ease your pain, deal with the crushing burdens that often fall on caregivers, address financial worries, and help you to live comfortably and in a way that prioritizes what's important to you.

Overlake's new Outpatient Palliative Care program extends the work we've been doing with patients inside the hospital, creating a care team — physician, nurse practitioner, social worker, and chaplain — to work in partnership with the patient's doctor and provide supportive services to patients and families.

Your contributions have always helped Overlake provide exceptional, compassionate medical care. Now you are also helping patients living with serious illnesses to benefit from palliative care outside the hospital. Palliative care:

- Treats the symptoms and stress of serious illness
- Improves the patient's quality of life
- Reduces readmissions and visits to the emergency room
- Helps families struggling to care for a loved one
- Clearly explains the often complex array of information to the patient and caregivers in an understandable way



Unlike hospice (comfort care at the very end of life), palliative care is provided in addition to curative medical treatment. "We try to make patients' lives better by addressing their symptoms earlier in their disease process and developing a plan that reflects their goals and values," explains Eileen Stevens, MSW, Overlake's Palliative Care Program Coordinator. "They shouldn't have to wait until the end."

Our initial Outpatient Palliative Care effort will be a pilot program focusing on patients with heart failure in the Overlake Medical Center Cardiology Clinic, with hopes of expanding to other patient populations in the future.

Grateful Thanks to Our 2017 Bandage Ball Sponsors



Careage Senior Living
First Choice Health
GLY Construction
Healthcare Realty
HMI, The Robison Family
Foundation
Honeywell Building Solutions
Kaiser Permanente

Matrix Anesthesia
NBBJ
Premera Blue Cross
Quest Media & Supplies, Inc.
Radia Inc., PS
Renton Collections
UW Medicine

Save the Date!

**Bandage Ball
2018**

April 21, 2018

**Benefiting Overlake's
Emergency Services**

Get in on the action!

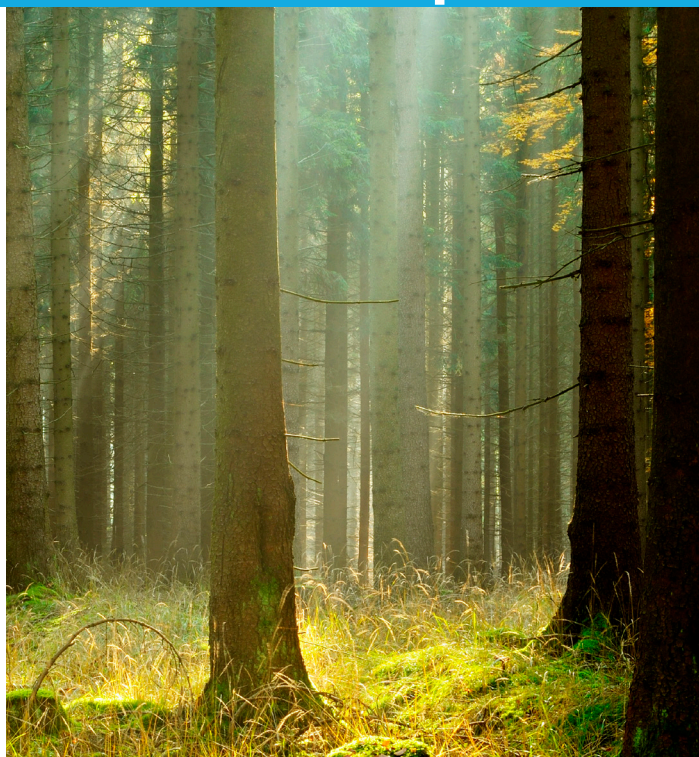




1035 116th Avenue NE
Bellevue, WA 98004

FOUNDATION

The Tree of Hope



Add Your Leaf Today!

It's not too late to make a contribution to support world-class cancer care.

The Tree of Hope is located inside the Cancer Center. With your donation, you can have a leaf inscribed with your name, the name of a loved one affected by cancer, or the name of a caregiver.

Please visit overlakehospital.org/TreeOfHope to learn more.

Thanks for Your Support